

## PRODUCT DATA AND DATA SHEET

**Product Name:** Analogue Energy Meter Three Phase 10(100)A

**Product Code:** KWH-DRT341A

**Description:** Kilowatt Hour Meter 3 Phase 10(100)  
A – Analogue - DIN mounted - 4 module 72mm

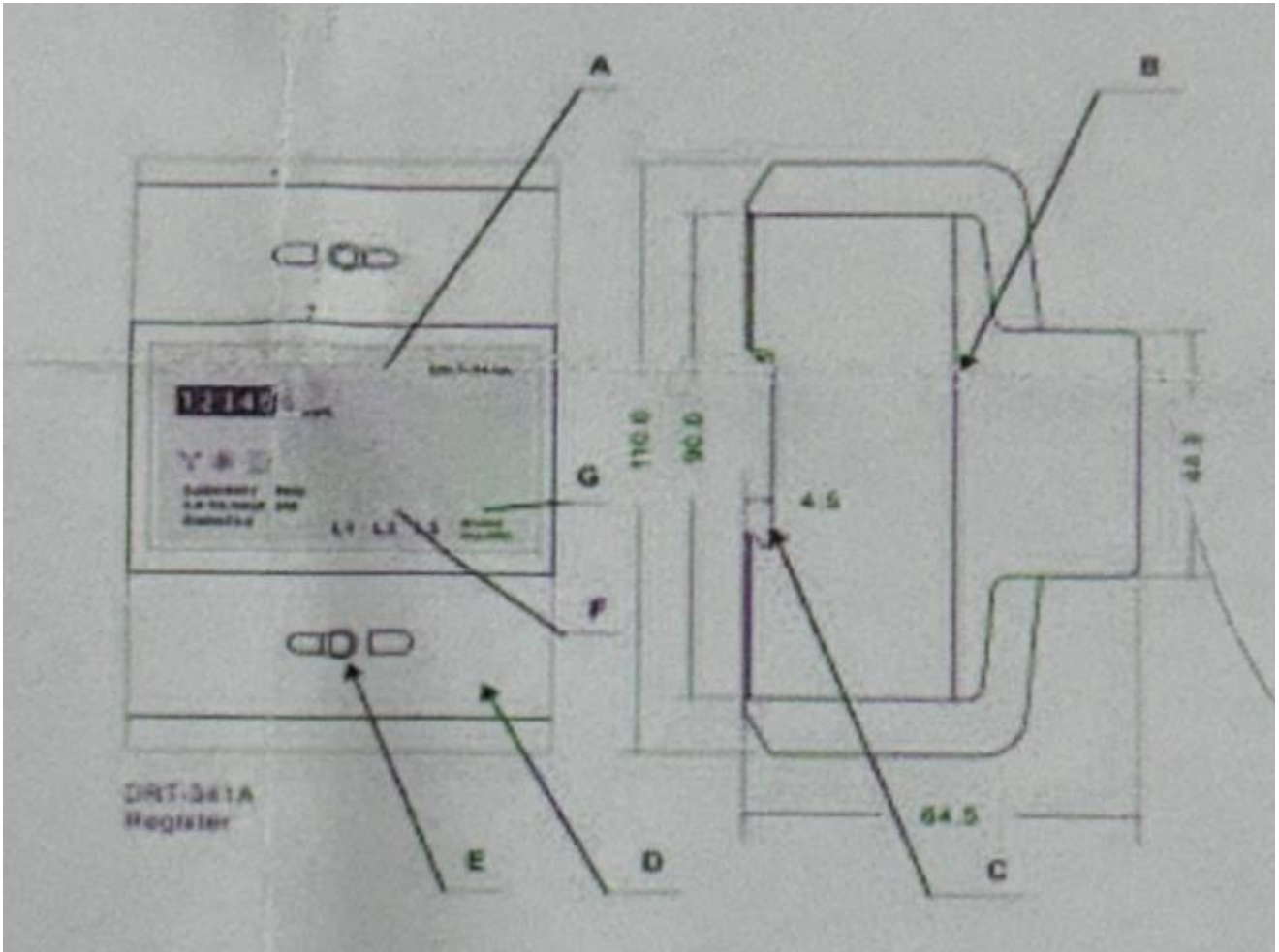
### Technical Specifications:

Nominal voltage (um)	3x230/400V AC
Operational voltage	3x161/279 to 300/500V AC
Operating temperature	-25 °C - +55 °C
Storage temperature	-30 °C - +70 °C
Operating humidity	≤75%
Storage humidity	≤95%
International standard	EN 50470-1
	EN 50470+3
Accuracy class	B
Protection against penetration of dust and water	IP51
Insulating encased meter of protective class	11
Basic current (Ib)	10A
Maximum rated current (Imax)	100A
Starting current (Ma)	0.4% of Ib
Operational frequency range	50Hz ± 10%
Power consumption of current	≤2W/ 10VA per phase
Pulse output rate	400 imp/kWh

### Description

- A. Front panel
- B. Cover
- C. Mounting (Base)
- D. Protection cover
- E. Security hasp
- F. Consumption  
Inductor (L1, L2, L3)
- G. Pulse output





### Dimensions

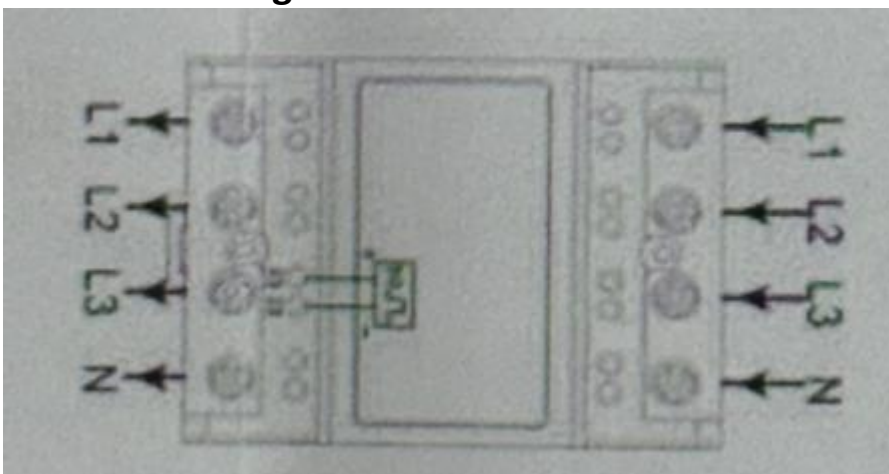
Height: 110mm

Width: 70mm

Depth: 64.5mm

**Mounting** DIN Rail 35mm

### Connection Diagram



- L1 L1 phase wire
- L2 L2 phase wire
- L3 L3 phase wire
- N Neutral wire
- 22 and 23 Pulse output contact