

PRODUCT DATA AND APPLICATION SHEET

PRODUCT NAME **Vertical Limited Switches**

DESCRIPTION **Button Plunger with Rollers**

PRODUCT CODE **CHL-5000, CHL-5030, CHL-5050, CHL-5100 and CHL-5200**

FEATURES

- Built in contact stand has double spring and long mechanical lift
- Metal shell with high mechanical strength
- Strong electric property 10A, 250V for 500,000 times
- Various actuators for different applications
- Conduit design for convenient cabling

MODEL	CHL	5000	5030	5050	5100	5200
Operating Force	OF (Max.)	750g	750g	750g	750g	900g
Release Force	RF (Min.)	100g	100g	100g	200g	200g
Pre-travel	PT (Max.)	20°	20°	20°	1.8mm	1.8mm
Tripping Position	TP±10%	22.5°	22.5°	22.5°	2.0mm	2.0mm
Movement Differential	MD (Max.)	10°	10°	10°	1.2mm	1.2mm
Over Travel	OT (Min.)	75°	75°	75°	4.0mm	4.0mm
Total Travel	TT (Min.)	95°	95°	95°	5.8mm	5.8mm



CHL-5000



CHL-5200



CHL-5030



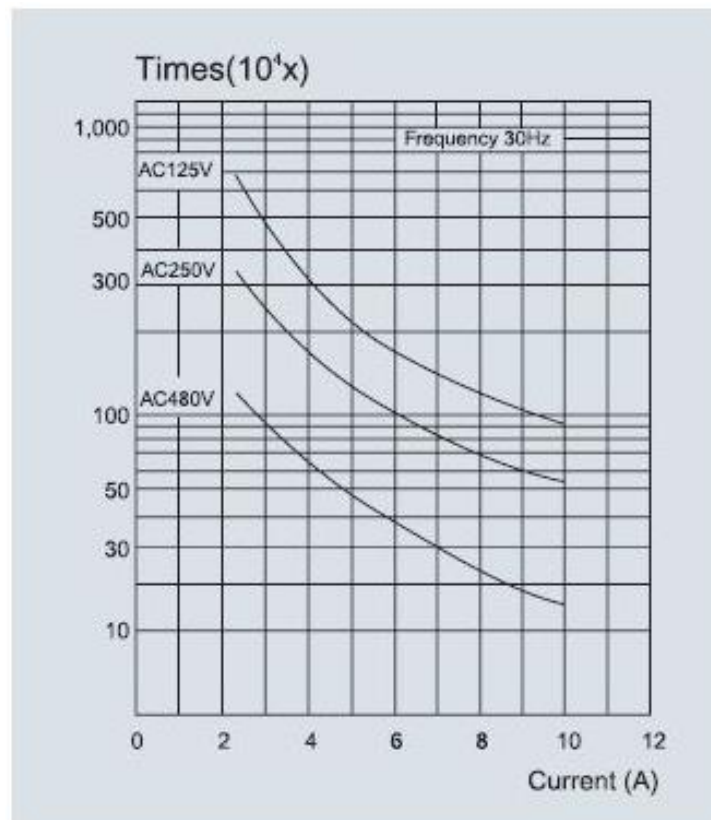
CHL-5100



CHL-5050

SPECIFICATIONS

Operation speed	5mm-0.5m/s
Operating frequency	Electrical: 30 operations/min
Contact resistance	25 Ω max. (initial value)
Insulation resistance	100m Ω min. (below 500VDC)
Dielectric strength	1000VAC, 50/60Hz for 1 minute between terminals of the same polarity
	1500VAC, 50/60Hz for 1 minute between current-carrying and non-current carrying metal parts
	1500 VAC, 50/60Hz for 1 minute between each terminal and ground
Vibration	10-55Hz, 1.5mm double amplitude
Shock	Mechanical durable: 1,00m/sec ² (about 30G's)
	Malfunction: 300m/sec ² (about 30G's)
Ambient temperature	Using: -20~+70°C (with no icing)
Humidity	<95%RH
Electrical Lift	500,000 operations above
Protection Level	IP65



Tesla

Electrical Components

4-8 Ferndell St SOUTH GRANVILLE NSW 2142

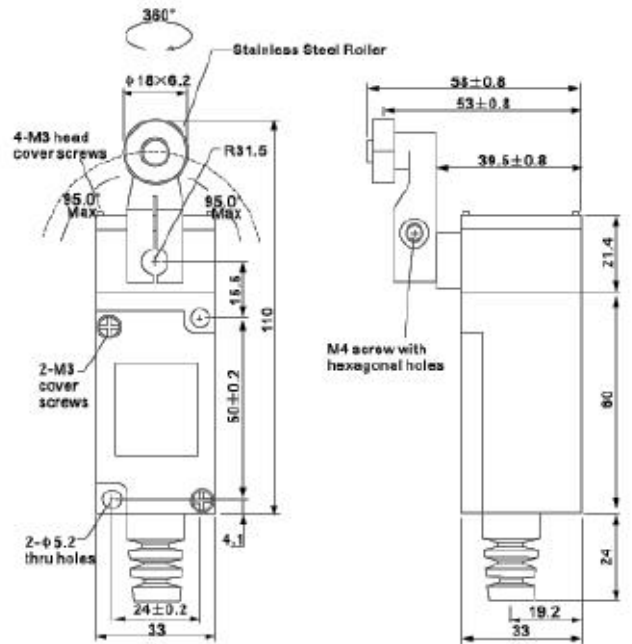
PO Box 3107 WETHERILL PARK NSW 2164

Ph: (02) 9632-5000

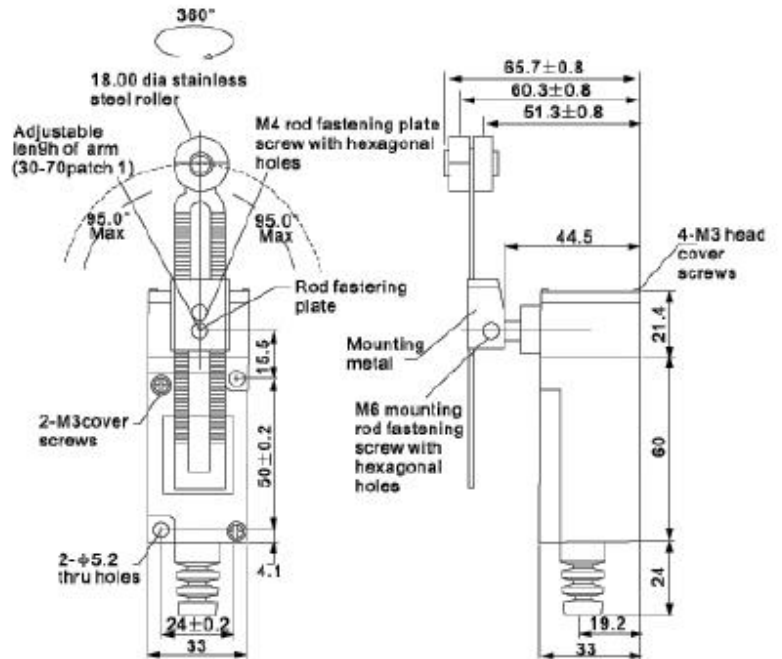
Fax: (02) 9632-5011

ABN: 18 165 515 257

CHL-5000

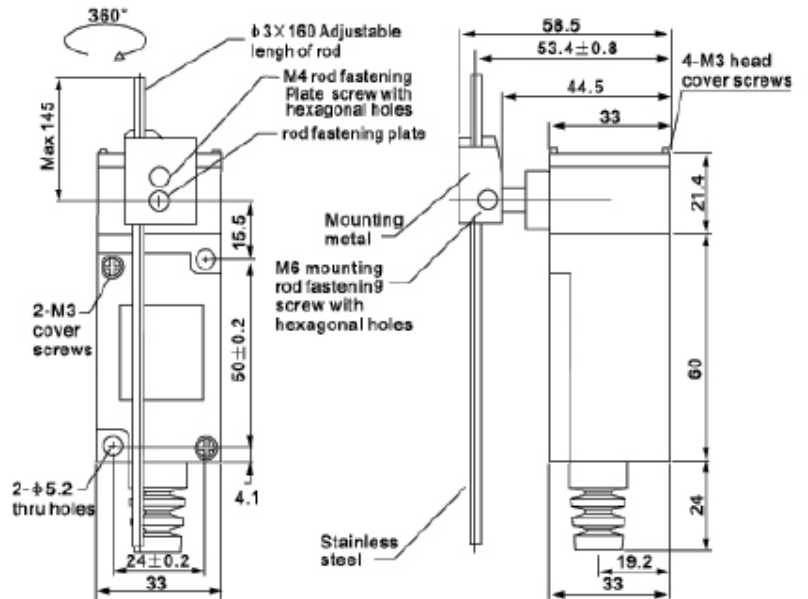


CHL-5030



Optional metal idler wheel

CHL-5050



CHL-5100

